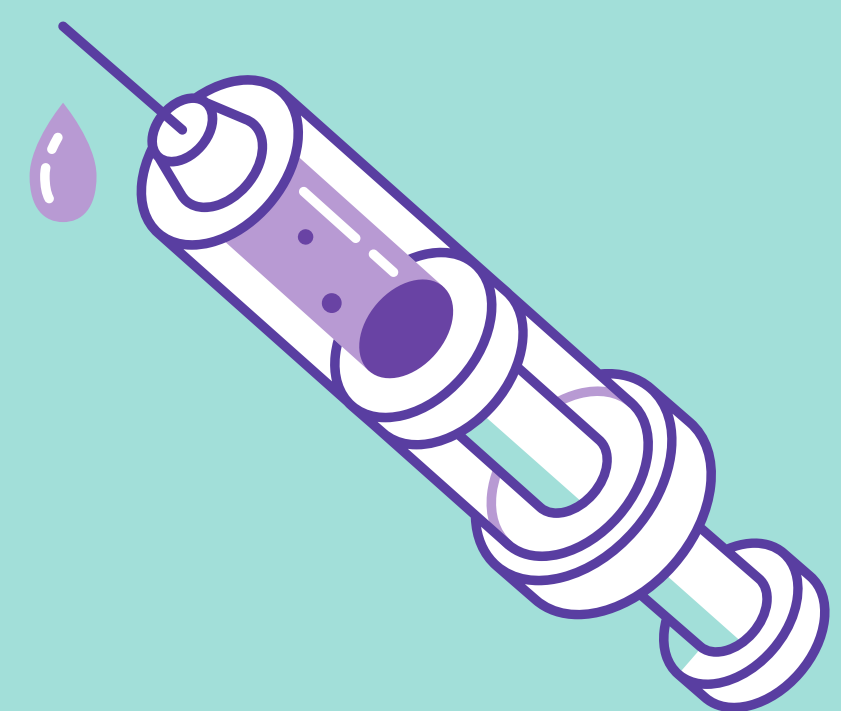
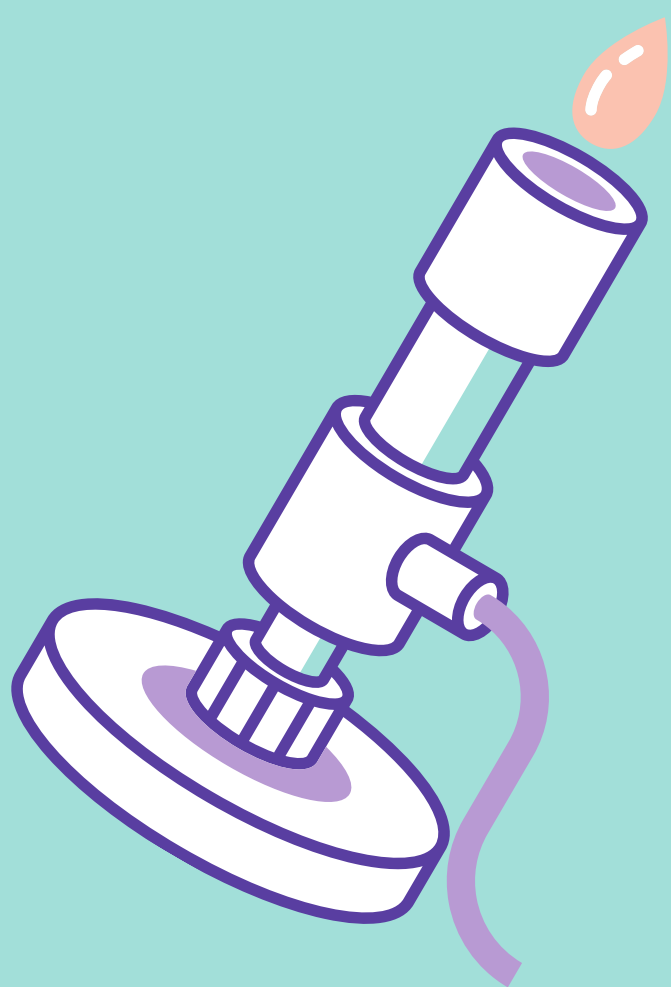


SAMPLE INTERVIEW QUESTIONS

TO POTENTIAL SUPERVISOR

- 1) In your opinion, what kind of student will succeed in your lab?
- 2) What are your expectations in regards to workload, number of hours worked per week, meeting frequency?
- 3) How many students do you supervise and how often do you see them?
- 4) How many other students would you consider taking at this time?
- 5) How much time do you spend in the lab (i.e., what is your availability)?
- 6) How would you describe your mentoring style? (e.g., hands-on vs. laissez-faire)
- 7) What is your preferred mode of communication (e.g., face-to-face, email, etc.)?
- 8) If accepted, will I be working mostly individually or as a member of a team?
- 9) Do you prefer to be involved in all stages of your students' research projects (i.e., editing drafts versus just editing the final version)?
- 10) Do you expect your students to have publications in order to complete their degree?
- 11) How much will you be able to help in terms of developing my project or later revising it as necessary?
- 12) What kind of exposure will the project give me in terms of common techniques and more specialized techniques?
- 13) Which grants have supported your lab, both past and present?
- 14) How many of your students have external funding?
- 15) Have the students finished their program in good time?
- 16) How many students have you successfully supervised in the past? Where have your previous students gone when they finished their degrees (e.g., PhD, postdoc, medical school, industry, etc.)?
- 17) Will the project lead to publications?
- 18) How do you determine authorship on publications? Do junior researchers (MSc, for example) in your lab often obtain first author publications?
- 19) Are there opportunities to participate in conferences?
- 20) Are there any opportunities for collaborations within the lab that could lead to co-authorship?



SAMPLE INTERVIEW QUESTIONS

TO POTENTIAL LABMATES

- 1) How many students are currently in the lab?
- 2) Are there postdocs, research assistants, or technicians in the lab?
- 3) What is the turnaround time for the supervisor to edit documents (i.e., abstracts, committee reports, and thesis)?
- 4) Does the supervisor travel often or have other significant responsibilities? If so, is there someone in their place to assist students, when needed?
- 5) How does skill training take place in the lab? (i.e., am I expected to develop these skills myself or is there a mentoring/training system in place for new skill acquisition?)
- 6) Could you describe the overall atmosphere in the lab?
- 7) Do you practice giving presentations or are you expected to know how to present/answer questions on your own?
- 8) Do many students from the lab get funding or awards?
- 9) Do you participate in journal club, and if so, how is it structured?
- 10) Are the lab meetings regular?
- 11) Do students in the lab help/collaborate with each other?
- 12) Do you guys spend time outside work?
- 13) If you went back in time, would you join this lab?
- 14) How do you think this lab fares among other labs in the Department?

